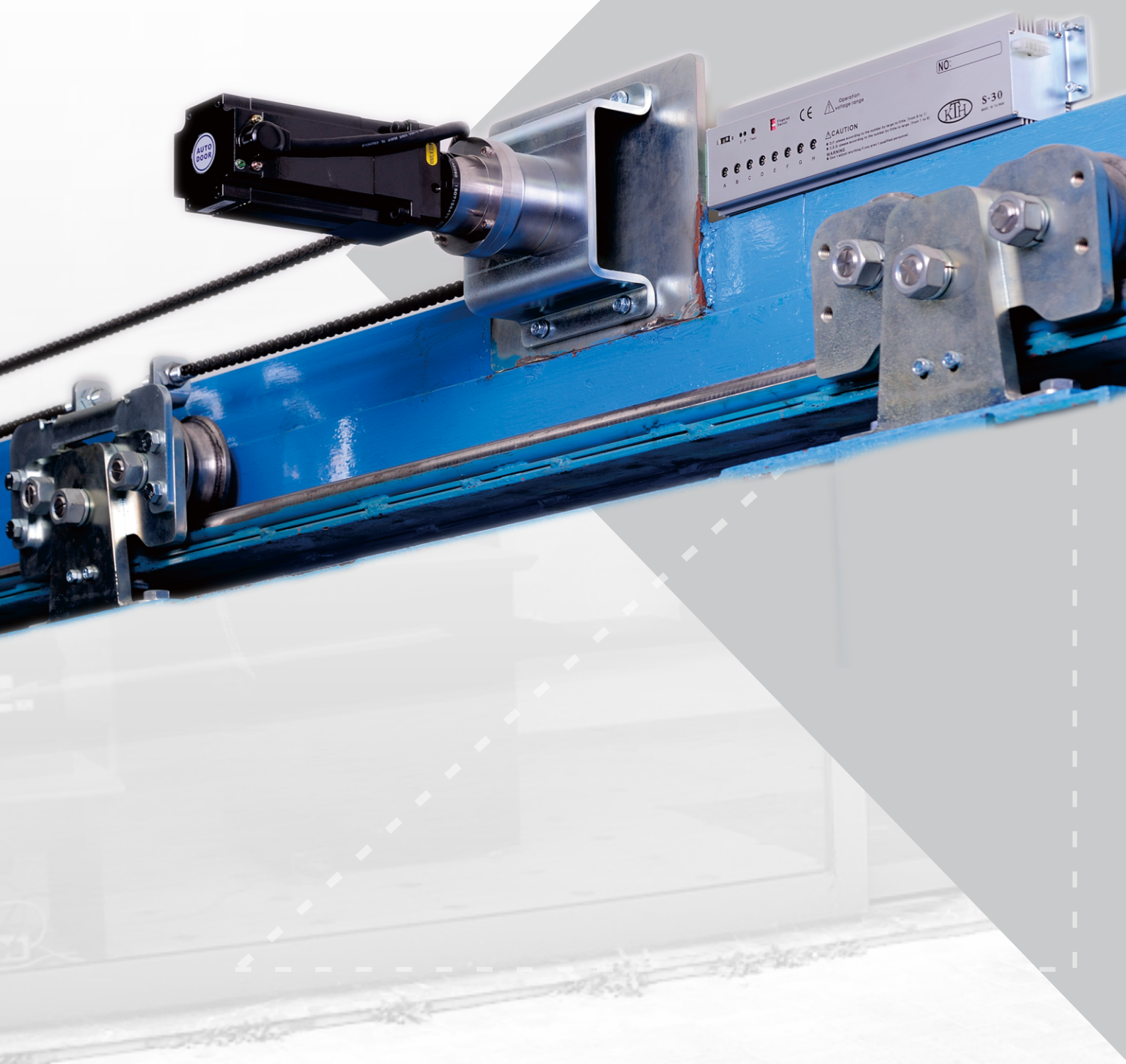


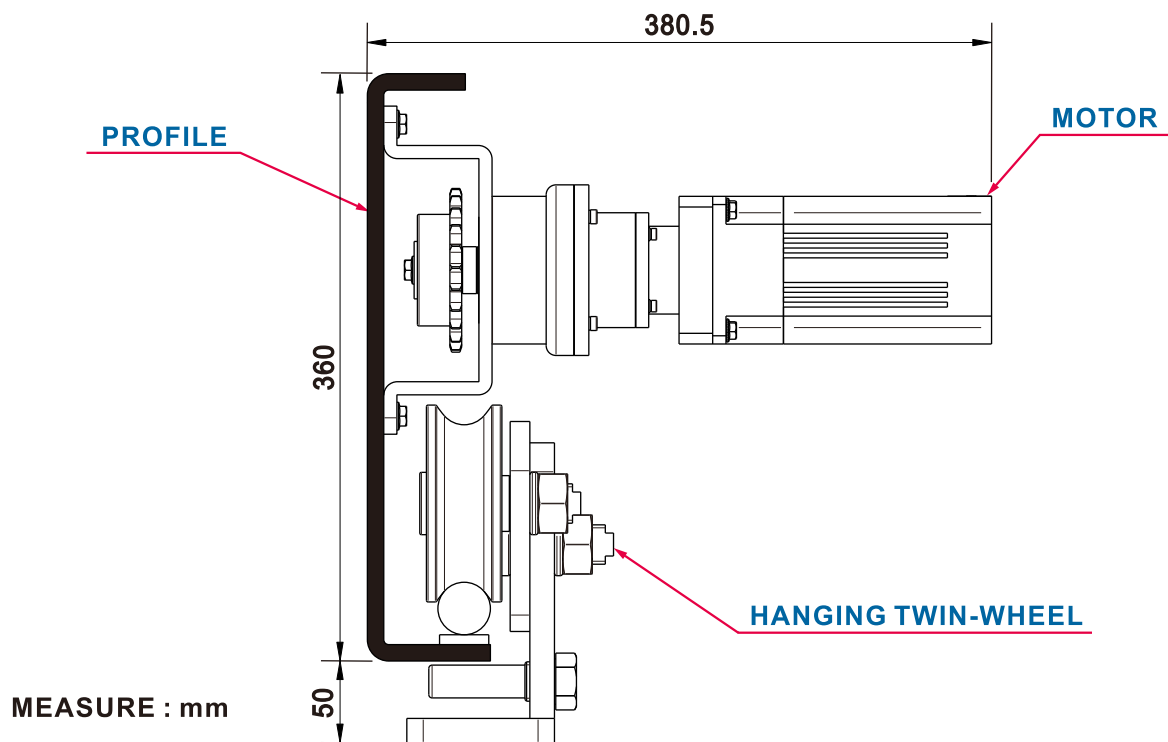
# **KTH S-30** **AUTOMATIC DOOR SYSTEM**



## ■ TABLE OF CONTENTS

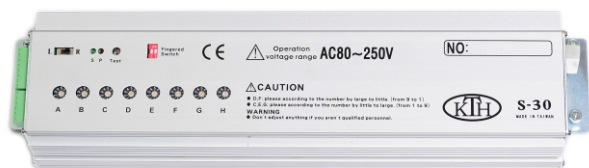
1. SPECIFICATION&PROFILE .....	1
2. COMPONENTS .....	2
3. THE POSITION OF THE HANGING TWIN-WHEEL .....	3
4. INSTALL THE RACK BELT.....	4
5. TEST AND ADJUST.....	5
6. ADJUST CONTROLLER .....	6
7. CONNECTION .....	7

## SPECIFICATION&PROFILE

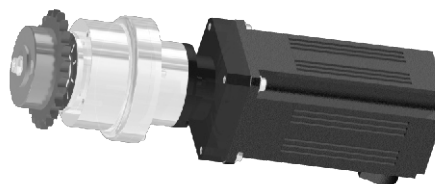


TYPE	S-30	
MODEL	SINGLE-WINGED	BI-PARTING
DOOR WEIGHT	2000kg X1(DOOR)	1500kg X2(DOOR)
DOOR WIDTH	1M~6M	1M~6M
INSTALL WAY	SURFACE INSTALL	SURFACE INSTALL
MOTOR	DC24V 250W BRUSHLESS DC MOTOR (PLANETARY GEAR)	
CONTROL	STANDARD MICRO-CONTROL	
POWER CONSUMPTION	250W	
VOLTAGE	AC100V~240V	
ENVIRONMENTAL TEMPERATURE	-20°C~+50°C	
VOLUME	65 DECIBEL(MAX.)	
STARTING SPEED	150mm/SEC.	120mm/SEC.
STARTING TIMES	0~20 SEC. (REGULABLE)	
TRANSMISSION IMPORTANT CONDITION	ROLLER CHAIN 40-1R	
OPENING DOOR RANGE	FULL/HALF-OPEN (REGULABLE)	
PFC POWER EFFICIENCY	0.95(IN AC100V FULL LOAD)	
TRACTION FORCE	WHEN POWER OFF THE DOOR CAN BE OPENED BY MANUAL	

## COMPONENTS



**MICRO-CONTROLLER**



**250W BRUSHLESS DC MOTOR  
(PLANETARY GEAR)**



**POWER SWITCH**



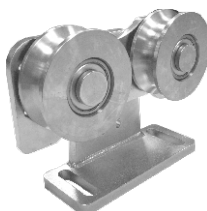
**SENSORS  
(OPTIONAL DEVICE)**



**ROLLER CHAIN**



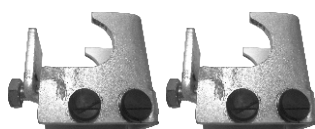
**BLOCK SCREW-4 PCS**



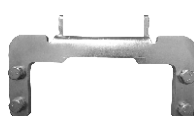
**HANGING  
TWIN WHEEL- 4PCS**



**BELT ROLLER**



**STOPER -2PCS  
(IN PROFILE)**



**ACTIVE BRACE**

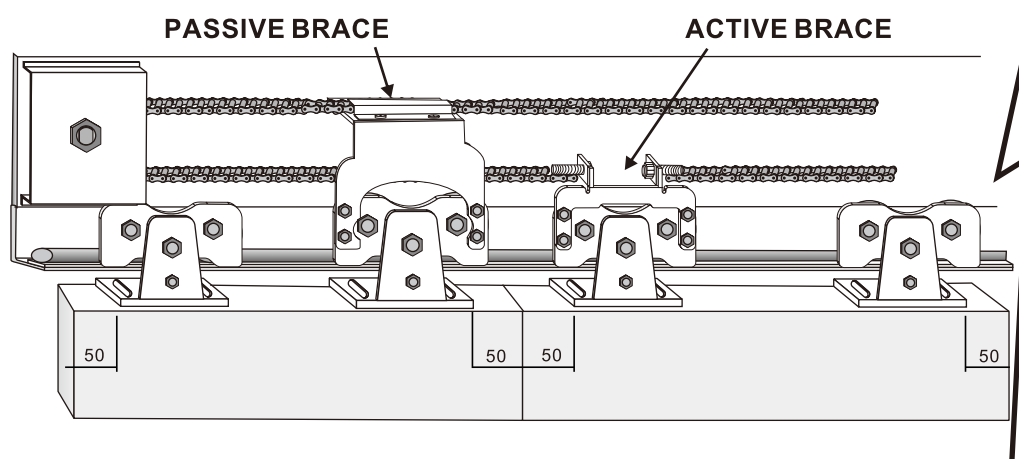


**PASSIVE BRACE**



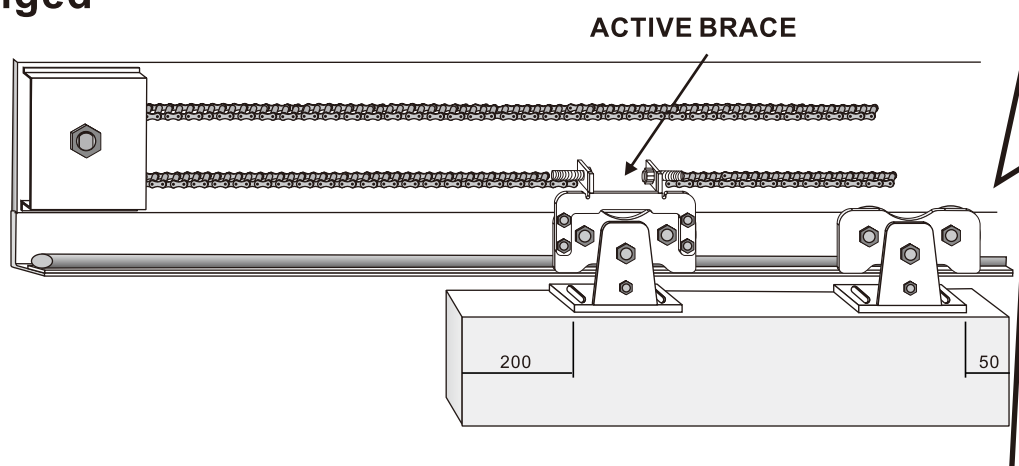
## ■ THE POSITION OF THE HANGING TWIN-WHEEL

### Bi-parting



**In order to open to the largest position. Please leave 50mm between the edge of door leaves and hangers**

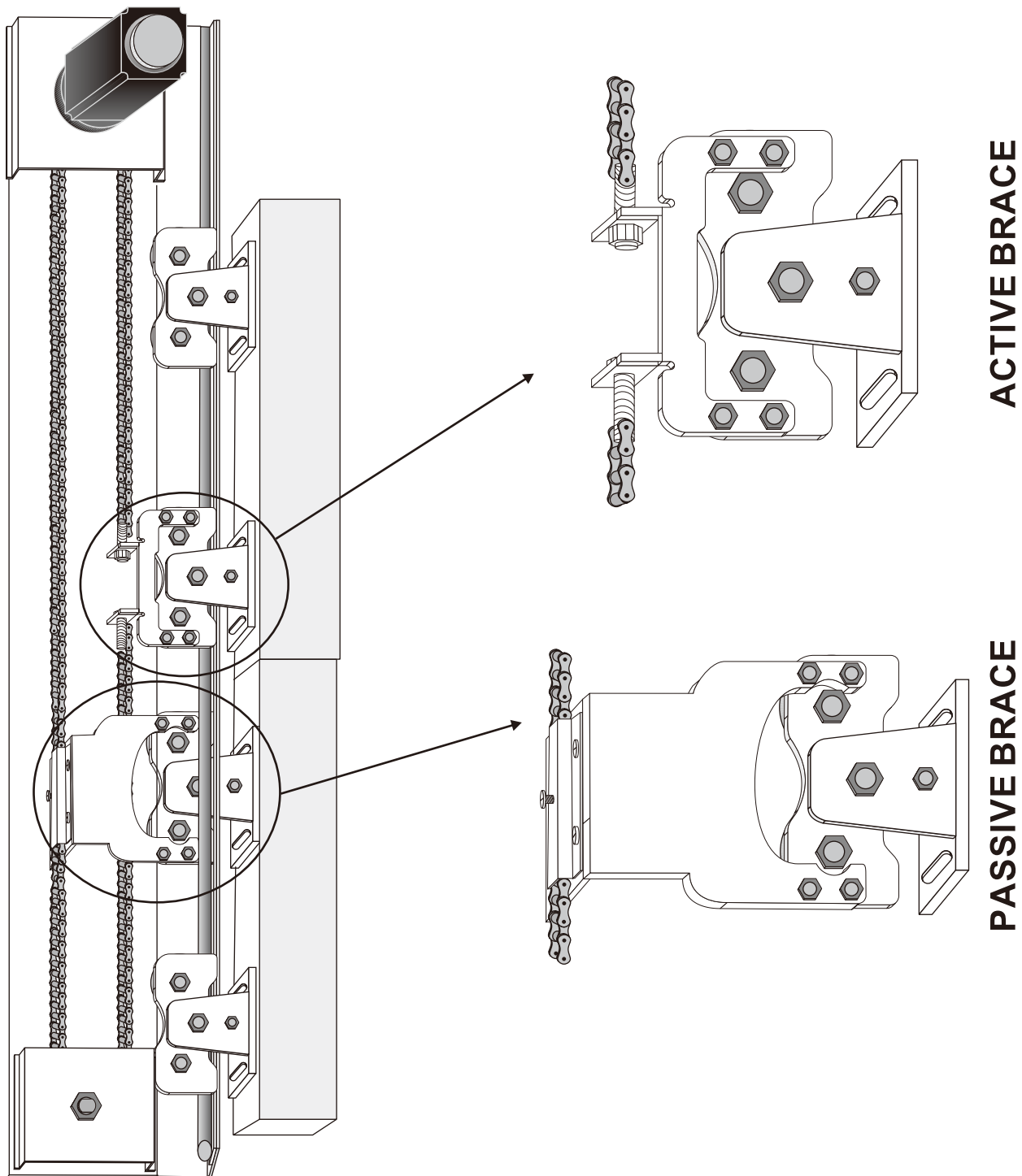
### Single-winged



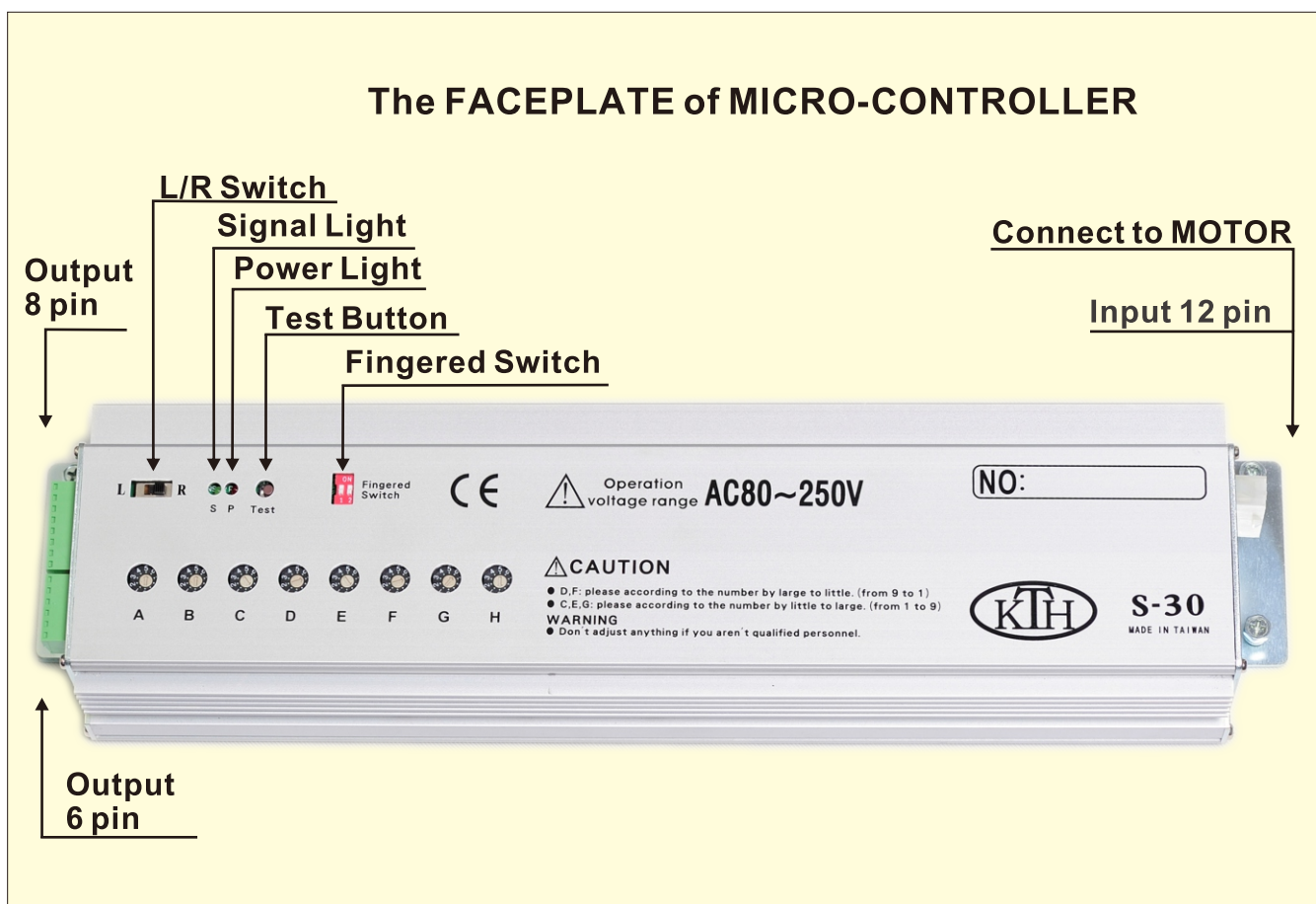
**In order to open to the largest position. Please leave 200mm between the edge of door leaf and left hanger.**

MEASURE : mm

## ■ INSTALL THE RACK BELT



## TEST AND ADJUST



**Red LED-Power is connected.**

**Green LED-Input the open door signal.**

**L / R switch- The direction of the door opening: right/left(R/L) .**

**Fingered Switch- When the pin 1 is ON, push once : open the door.**

**Push again: close the door.**

**Fingered Switch-Pin 2 is standby.**

## ADJUST CONTROLLER



### A Full/Half opening

Adjust the RANGE of the HALF OPEN DISTANCE.  
Higher number, wider range.



### B Brake power

The Door-Leaf is slight, the BRAKE POWER is less.  
Please adjust number from number 5 if the Door-Leaf is over 80kg.



### C The opening speed of the door

Adjust the OPEN SPEED  
Higher number, faster speed.  
CAUTION: please adjust the number one by one from low to high.



### D The slowing range of opening door

Adjust the SLOW RANGE of OPENING DOOR  
Higher number, more range about the slow range at open door position.  
CAUTION: please adjust the number one by one from high to low.



### E The closing speed of the door

Adjust the CLOSED SPEED  
Higher number, faster speed.  
CAUTION: please adjust the number one by one from low to high.



### F The slowing range of closing door

Adjust the SLOW RANGE of CLOSED DOOR  
Higher number, more range about the slow range at open door position.  
CAUTION: please adjust the number one by one from high to low.



### G The slowing speed of the door

Adjust the SLOW SPEED  
Higher number, faster speed.  
CAUTION: please adjust the number one by one from low to high.



### H Opening hold time

Adjust the HOLD OPEN TIME  
Higher number, the hold time is longer.

NUMBER	0	1	2	3	4	5	6	7	8	9
SECOND	0	1	2	3	4	5	6	10	15	20

## CONNECTION

